

# CASM-40

## Brushless DC motor BG 75 and adapters

CASM-40 linear units with brushless DC motors are perfectly suited to replace pneumatic cylinders in many applications.

It is a very simple system to set up. Connect the motor to a 40 V DC power supply and program up to 14 motion profiles with your computer and the programming accessory kit.

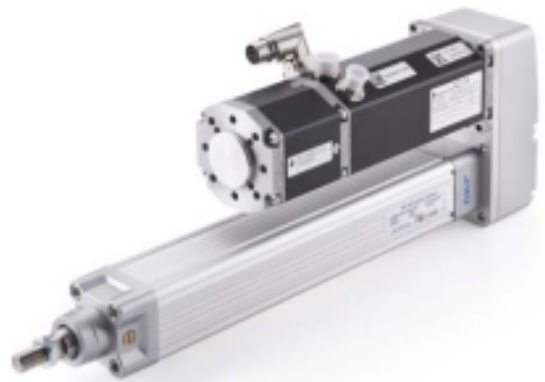
After programming the motor, the motion profile can be activated by 2 – 4 binary signals (PLC outputs or switches) and the actuator will run to the defined position.

The brushless DC motor, BG 75 × 75 PI, comes with an internal encoder with 4 096 counts per turn for high positioning accuracy. The internal brake is activated after each movement to secure the system in case of a power loss and to give the motor time to cool down when not in operation.

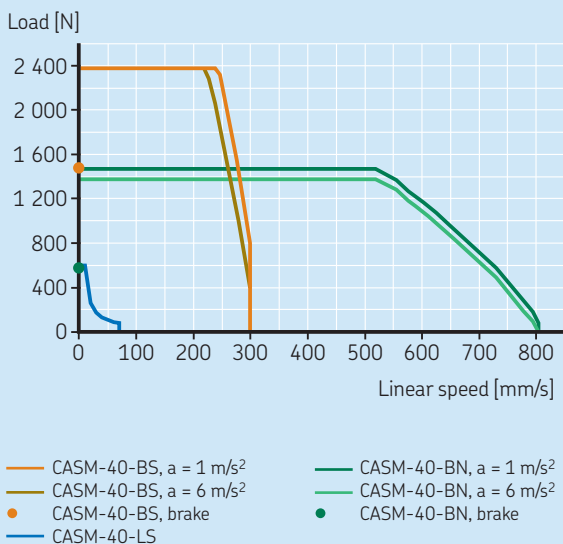
The brake also enables an increase in the power performance of a full motion cycle.

For more information, please visit the following site:

[www.skf.com/casm](http://www.skf.com/casm)



Load / linear speed diagram



Load = force acting on the actuator  
(gravity force + acceleration force + constant force)

### Order numbers for a complete actuator

	Order No.
Linear unit according to your needs	See CASM-40 Linear units
Brushless DC motor BG 75 × 75 PI	BG75X75PI
Adapter kit, parallel or in-line	ZBE-37557x, see below
Accessories according to your needs	See CASM-40 Accessories
Cable kit for BG 75	ZBE-530630-xx, see below

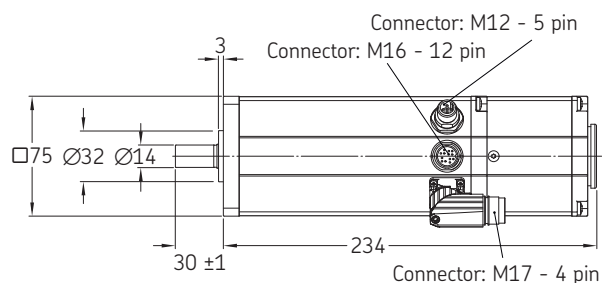
### Accessories

	Order No.
Programming kit for BG motor series	ZBE-530615
Cable kit 3 m for BG 75	ZBE-530630-03
Cable kit 10 m for BG 75	ZBE-530630-10
Replacement belt for parallel adapter	ZBE-375600-63



## BLDC motor BG 75x75 PI

with PI interface and brake



## Order No.:

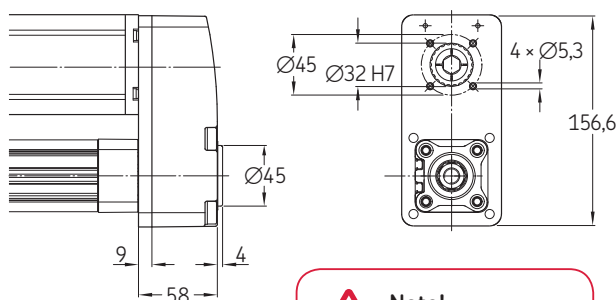
BG75X75PI

### Motor data

	Symbol	Unit	BG 75x75 PI
Nominal torque (100 K)	M	Nm	1.16
Stall torque (20 °C)	M <sub>0</sub>	Nm	4.1
Nominal rotational speed	ω	1/min	3 700
Nominal voltage	U	V DC	40
Nominal current (100 K)	I	A	12.7
Peak current (2 s)	I <sub>peak</sub>	A	50
Max. output power (20 °C)	P <sub>out</sub>	kW	0.95
Inertia with brake	J	kgm <sup>2</sup>	0.062
Weight with brake	m	kg	3.08

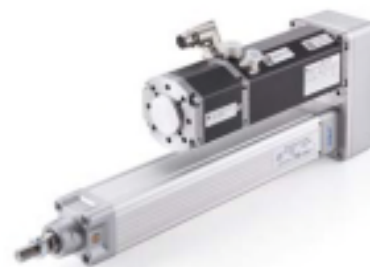
## Parallel adapter kit

for CASM-40 and BLDC motor BG 75



## Order No.:

ZBE-375578



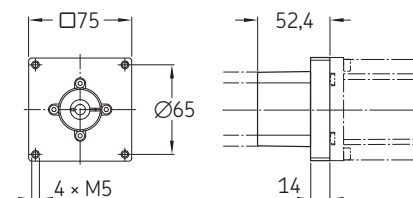
### System capabilities

	F <sub>peak</sub>	F <sub>m</sub> <sup>1)</sup>	V <sub>max</sub>
CASM-40-LS	600 N	600 N	70 mm/s
CASM-40-BS	2 375 N	1 020 N	300 mm/s
CASM-40-BN	1 484 N	459 N	825 mm/s

<sup>1)</sup> Mean load over full cycle. For more information please visit [skf.com/casm](http://skf.com/casm)

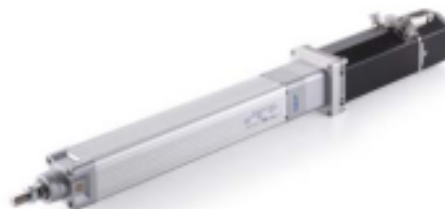
## In-line adapter kit

for CASM-40 and BLDC motor BG 75



## Order No.:

ZBE-375579



### System capabilities

	F <sub>peak</sub>	F <sub>m</sub> <sup>1)</sup>	V <sub>max</sub>
CASM-40-LS	600 N	600 N	70 mm/s
CASM-40-BS	2 375 N	1 020 N	300 mm/s
CASM-40-BN	1 484 N	459 N	825 mm/s

<sup>1)</sup> Mean load over full cycle. For more information please visit [skf.com/casm](http://skf.com/casm)

© SKF is a registered trademark of the SKF Group.

© SKF Group 2014

The contents of this publication are the copyright of the publisher and may not be reproduced (even extracts) unless prior written permission is granted. Every care has been taken to ensure the accuracy of the information contained in this publication but no liability can be accepted for any loss or damage whether direct, indirect or consequential arising out of the use of the information contained herein.

PUB MT/P8 14793 EN · September 2014

## Acorn Industrial Services Ltd



### Central distribution centre

#### Acorn CDC

**T** 01709 789 955  
**F** 01709 789 951  
**E** [north@acorn-ind.co.uk](mailto:north@acorn-ind.co.uk)  
**W** [www.acorn-ind.co.uk/north](http://www.acorn-ind.co.uk/north)

### Divisions

#### Linear Division

**T** 01709 789 949  
**F** 01709 789 951  
**E** [linear@acorn-ind.co.uk](mailto:linear@acorn-ind.co.uk)  
**W** [www.acorn-ind.co.uk/linear-sales](http://www.acorn-ind.co.uk/linear-sales)

#### Couplings Division

**T** 01709 789 957  
**F** 01709 789 951  
**E** [couplings@acorn-ind.co.uk](mailto:couplings@acorn-ind.co.uk)  
**W** [www.acorn-ind.co.uk/coupling-sales](http://www.acorn-ind.co.uk/coupling-sales)

#### Export Division

**T** +44 1709 789 933  
**F** +44 1709 789 966  
**E** [export@acorn-ind.co.uk](mailto:export@acorn-ind.co.uk)  
**W** [www.acorn-ind.co.uk/export-sales](http://www.acorn-ind.co.uk/export-sales)

### Regional Distribution Centres

#### Deeside RDC

**T** 01244 281 280  
**F** 01244 281 671  
**E** [deeside@acorn-ind.co.uk](mailto:deeside@acorn-ind.co.uk)  
**W** [www.acorn-ind.co.uk/deeside](http://www.acorn-ind.co.uk/deeside)

#### East Midlands RDC

**T** 01246 236 400  
**F** 01246 202 898  
**E** [eastmidlands@acorn-ind.co.uk](mailto:eastmidlands@acorn-ind.co.uk)  
**W** [www.acorn-ind.co.uk/eastmidlands](http://www.acorn-ind.co.uk/eastmidlands)

#### Fife RDC

**T** 01592 772 275  
**F** 01592 773 390  
**E** [fife@acorn-ind.co.uk](mailto:fife@acorn-ind.co.uk)  
**W** [www.acorn-ind.co.uk/fife](http://www.acorn-ind.co.uk/fife)

#### Midlands RDC

**T** 0121 569 7888  
**F** 0121 569 7877  
**E** [midlands@acorn-ind.co.uk](mailto:midlands@acorn-ind.co.uk)  
**W** [www.acorn-ind.co.uk/midlands](http://www.acorn-ind.co.uk/midlands)

#### North East RDC

**T** 0191 417 8899  
**F** 0191 419 0001  
**E** [northeast@acorn-ind.co.uk](mailto:northeast@acorn-ind.co.uk)  
**W** [www.acorn-ind.co.uk/northeast](http://www.acorn-ind.co.uk/northeast)

#### North West RDC

**T** 0845 602 3568  
**F** 01229 833510  
**E** [northwest@acorn-ind.co.uk](mailto:northwest@acorn-ind.co.uk)  
**W** [www.acorn-ind.co.uk/northwest](http://www.acorn-ind.co.uk/northwest)

#### Scotland RDC

**T** 01506 476 199  
**F** 01506 462 655  
**E** [scotland@acorn-ind.co.uk](mailto:scotland@acorn-ind.co.uk)  
**W** [www.acorn-ind.co.uk/scotland](http://www.acorn-ind.co.uk/scotland)

#### South West RDC

**T** 01179 820 414  
**F** 01179 823 222  
**E** [southwest@acorn-ind.co.uk](mailto:southwest@acorn-ind.co.uk)  
**W** [www.acorn-ind.co.uk/southwest](http://www.acorn-ind.co.uk/southwest)